


PRODUCT SHEET

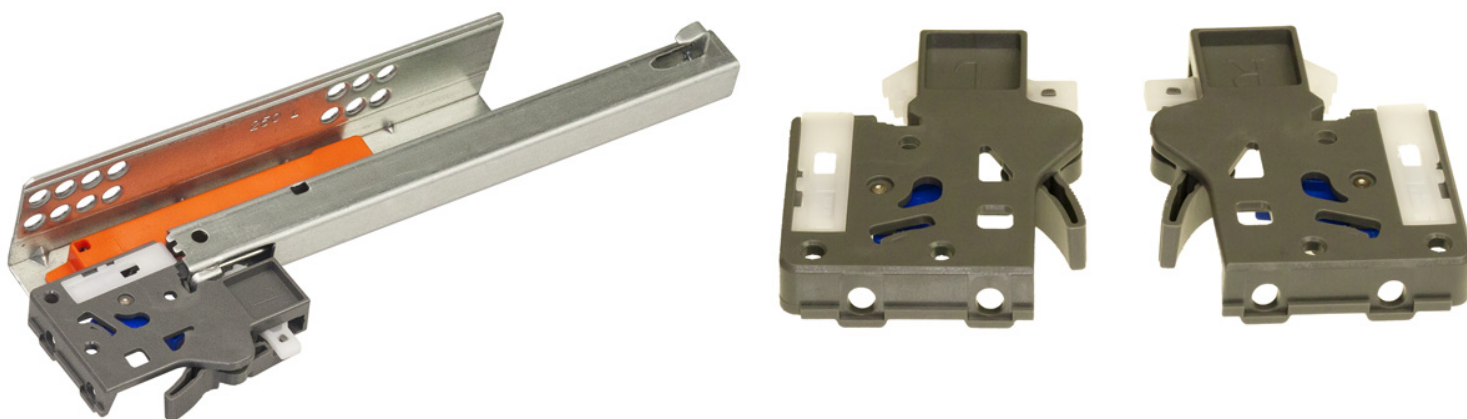
Description:

Invisible Semi Extension PTO, 400mm, Pre-Zinc, W/Quick Release Handles, Max Drawer Width:500mm, Load Capacity:25Kg

Item number:

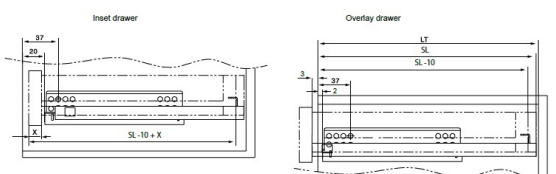
16.13.428-0

Units	Box	Carton	HS Code	Barcode
Pair	1	10	8302420090	
				5704866064385

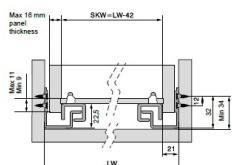


Installation dimensions

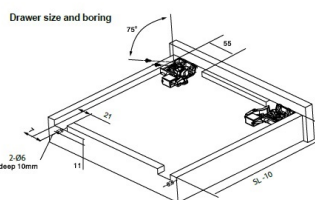
SL= Slide length LT= Internal cabinet depth Inset drawer LT min=SL+21 Overlay drawer LT min=SL+3



Slide length	250 mm	300 mm	350 mm	400 mm	450 mm	500 mm	550 mm
Item No.	16.13.425	16.13.426	16.13.427	16.13.428	16.13.429	16.13.430	16.13.431

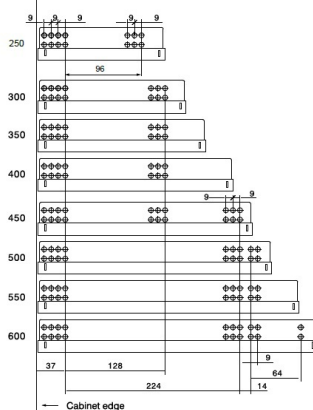


Drawer size and boring

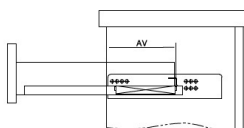


SL (mm)	250	300	350	400	450	500	550	600
AV (mm)	98,5	98,5	98,5	118,5	118,5	118,5	138,5	138,5

Hole pattern



Extension loss



SISO A/S

Mileparken 11
DK-2740 Skovlunde
Denmark
VAT: DK 24786013

Phone +45 45 830 900

www.siso.dk
siso@siso.dk

Danske Bank
Nytrov Branch
Copenhagen
SWIFT: DABADKKK

Account no.
4180 3112 112936
IBAN Account
DK7230003112112936